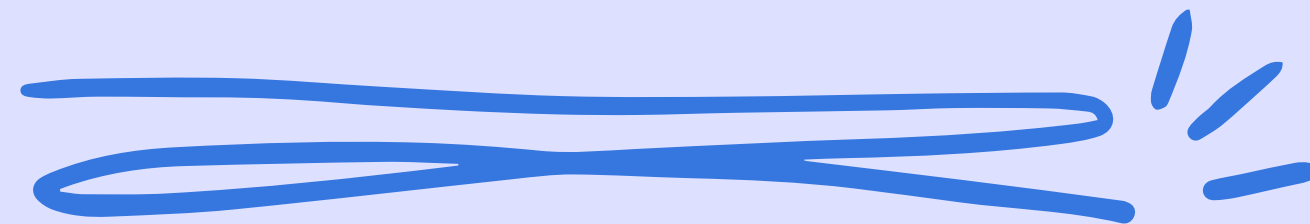




Magic Valley Electric Cooperative



Keeping Your Power Reliable and Affordable



Elizabeth Boyd
Business Development

Magic Valley Electric Cooperative



Agenda

- The Cooperative Advantage
- Coop History 101
- Utility Profile and Mission
- Certification Area
- Why Magic Valley Electric Coop?
- Projects Highlight
- Q&A
- Contact Info



The Cooperative Advantage

MVEC operates by the 7 cooperative principles

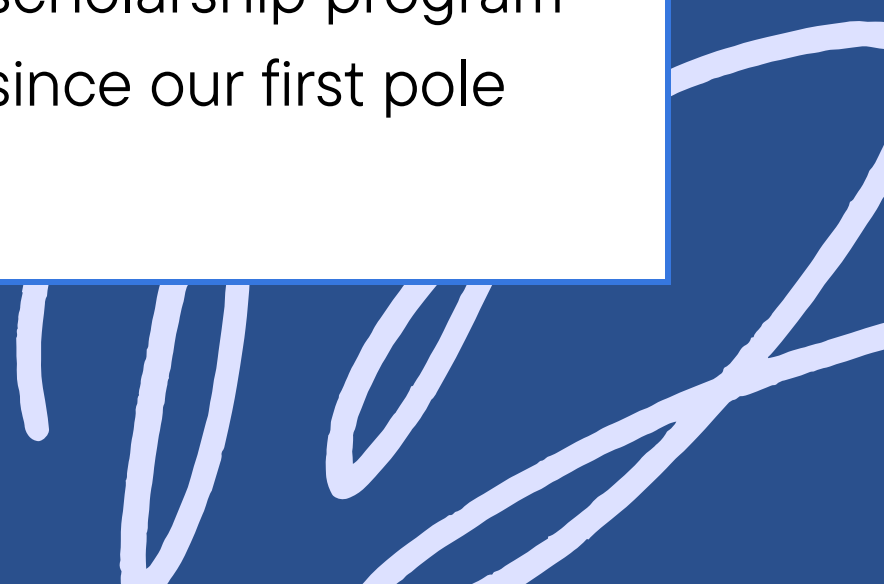
1. Voluntary and Open Membership, 2. Democratic Member Control, 3. Members' Economic Participation, 4. Autonomy and Independence, 5. Education, Training, and Information, 6. Cooperation Among Cooperatives, and 7. Concern for Community

Member owned

We are a nonprofit organization that is owned and controlled by the members of our community. We ask ourselves first, will this benefit our members? We also issue capital credit checks annually to share any profits with our members.

Non-profit

We are rooted in the community and give back through our scholarship program and the multiple donations and partnerships we have made since our first pole went up in 1938.



Coop History – A Synopsis



MVEC's history began with a \$200,000 loan from the Electrifying Rural America program in 1937.



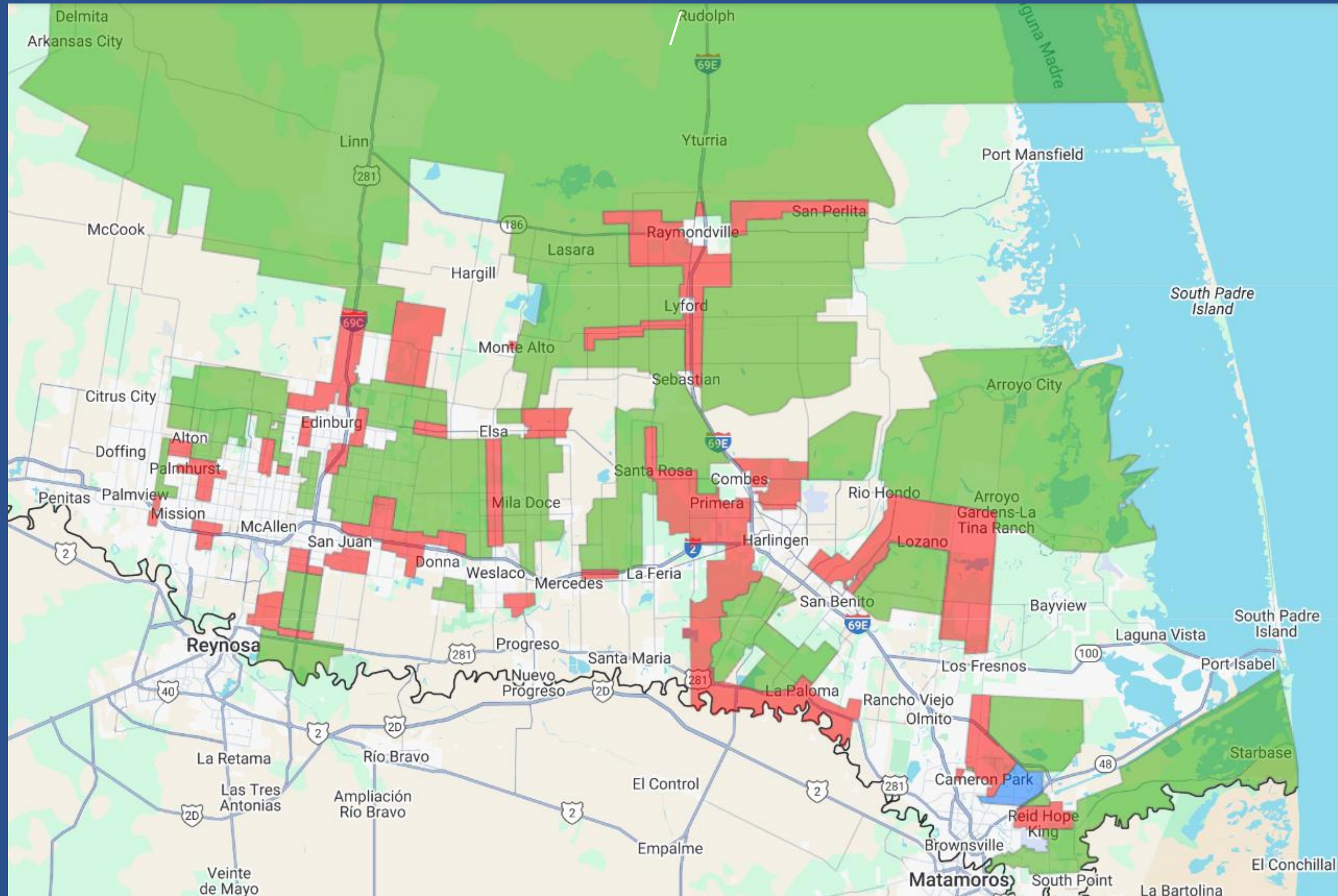


Utility Profile

- * Magic Valley Electric Cooperative serves 127,962 total members, more than 155,000 meters, and over 4,000 square miles of service territory across 5 counties in the Rio Grande Valley. As a cooperative our **mission is to enhance people's lives by safely providing the most reliable and affordable electric service by keeping our members' best interests in mind.** We look forward to working with you both as a valued member of our business community, and as a member of our cooperative.

Certification Map

<https://magicvalley.coop/map>





Why Magic Valley Electric Coop?

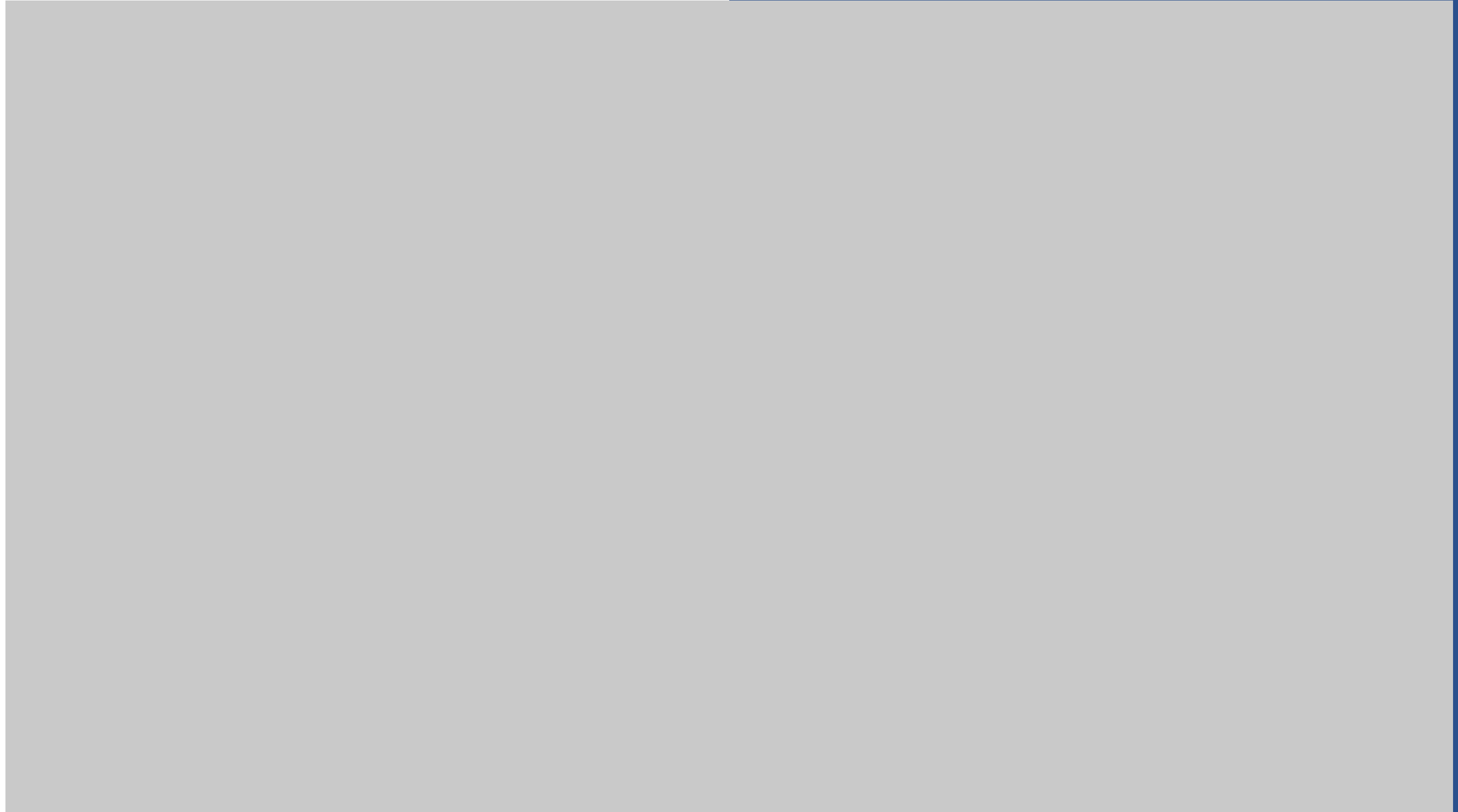


We offer value beyond simple business transactions.

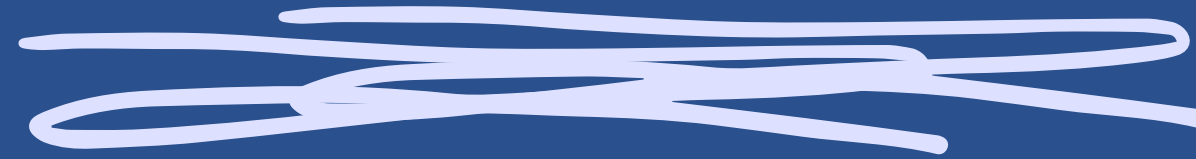
1. MVEC bases all decisions on the 7 cooperative principles and in the best interest of all our members.
2. Because we are a non-profit, our rates are consistently the lowest.
3. We have multiple lobbies across the RGV where you can speak to a live customer service agent or visit one in-person to meet your unique needs.
4. We are constantly expanding by adding new lines, and upgrading and building resilience to our existing lines and substations.
5. Invest local. MVEC is a staple in the community dating back to 1937, and we are dedicated to giving back through our charitable organization, MVEC Cares.
6. With an expanding service territory and capacity for growth, we understand the expectations of the logistics and warehouse industry, and we are ready to meet your needs.



Project Highlight



Q&A



Rio Grande Valley Electric Service Providers			September 1, 2025
Lowest Cost Provider List (Variable)			
Rank	REP/Company	\$/kWh	\$ kWh (1,000 kWh)
1	Magic Valley Electric Cooperative	\$ 0.111	\$ 110.95
2	Brownsville PUB	\$ 0.111	\$ 111.26
3	INFUSE ENERGY	\$ 0.146	\$ 146.00
4	REVOLUTION ENERGY LLC	\$ 0.146	\$ 146.00
5	CHARIOT ENERGY	\$ 0.157	\$ 157.00
6	NEC Co-op Energy	\$ 0.169	\$ 169.00
7	RELIANT	\$ 0.179	\$ 179.00





Contact Info

Elizabeth Boyd –

(956) 540-3336

salazare@magicvalley.coop

magicvalley.coop